

Supplementary Information

Nanoemulsion of *Mentha piperita* essential oil active against *Mycobacterium* strains

Niharika Sinha,^{1*} Deeksha Sharma,¹ Md Sajid Hussain¹, Megha Nain¹, Ruby Verma¹, Sameena Alam², Rajesh Kumar Gupta^{1*}

¹Drug development Laboratory, School of Vocational Studies and Applied Sciences, Gautam Buddha University, Greater Noida-201308. India. ²Sree Dattha Institute of Pharmacy, Sheriguda, Hyderabad, A.P., India

Fax No: 01202344215, Email: mayraj1@rediffmail.com/rajesh@gbu.ac.in

Table of contents

Figure S1: Representative chromatogram from GC analysis of L-Menthol.

Figure S2: Representative chromatogram from GC analysis of fraction R1 of *M. piperita* essential oil.

Figure S3: Representative chromatogram from GC analysis of fraction R2 of *M. piperita* essential oil.

Figure S4: Representative chromatogram from GC analysis of fraction R3 of *M. piperita* essential oil.

Figure S5: Representative chromatogram from GC analysis of fraction R4 of *M. piperita* essential oil.

Figure S6: Representative chromatogram from GC analysis of Isomenthone.

Figure S7: GC-MS chromatogram of most active *M. piperita* essential oil fraction R2.

Figure S8: Droplet size distribution of N1 nanoemulsion (O/W, 1:1).

Figure S9: UV-visible spectra of nanoemulsion a) N1 (1:1, O/W); b) N2 (2:3, O/W).

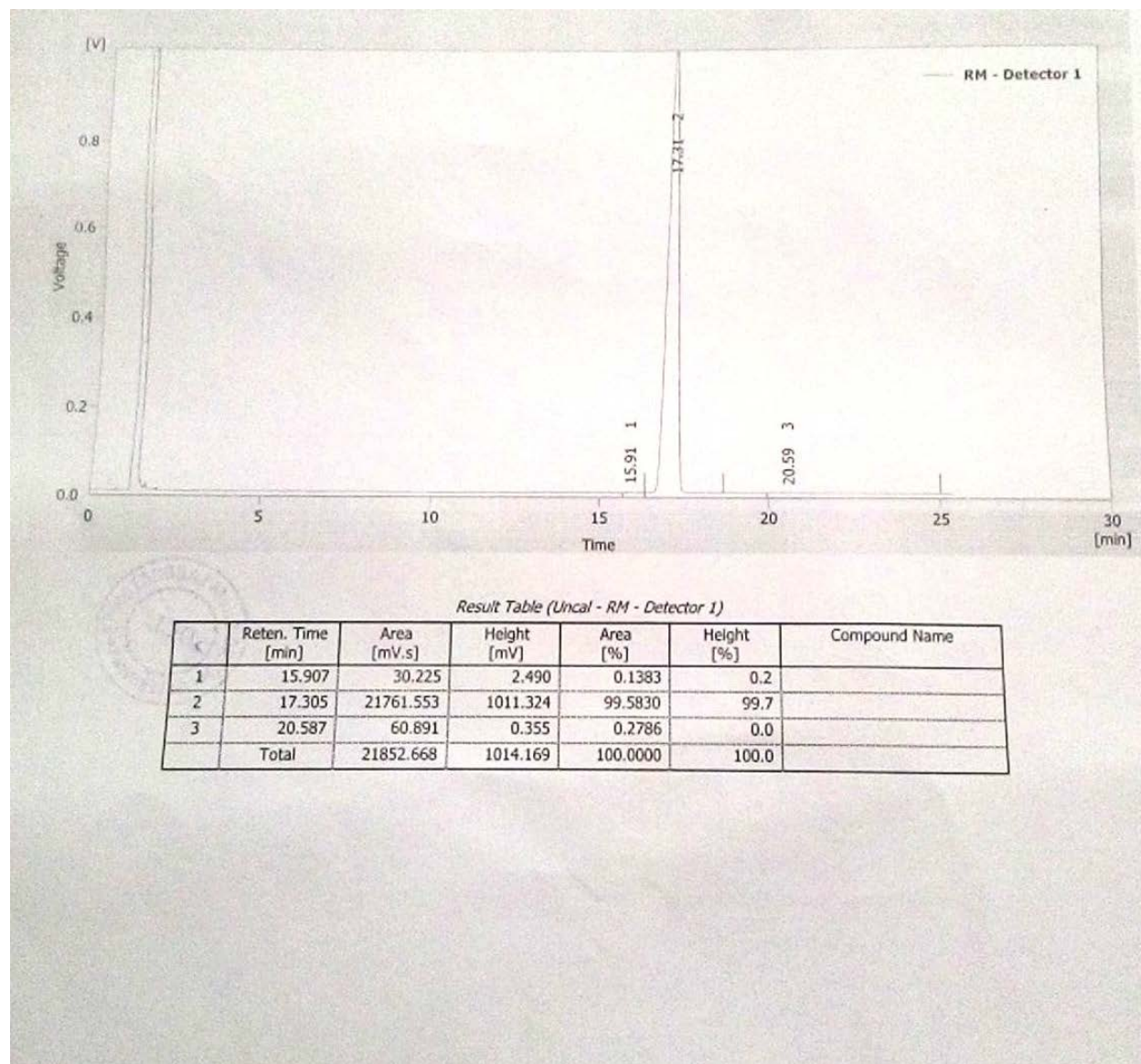


Figure 2: Representative chromatogram from GC analysis of L-Menthol

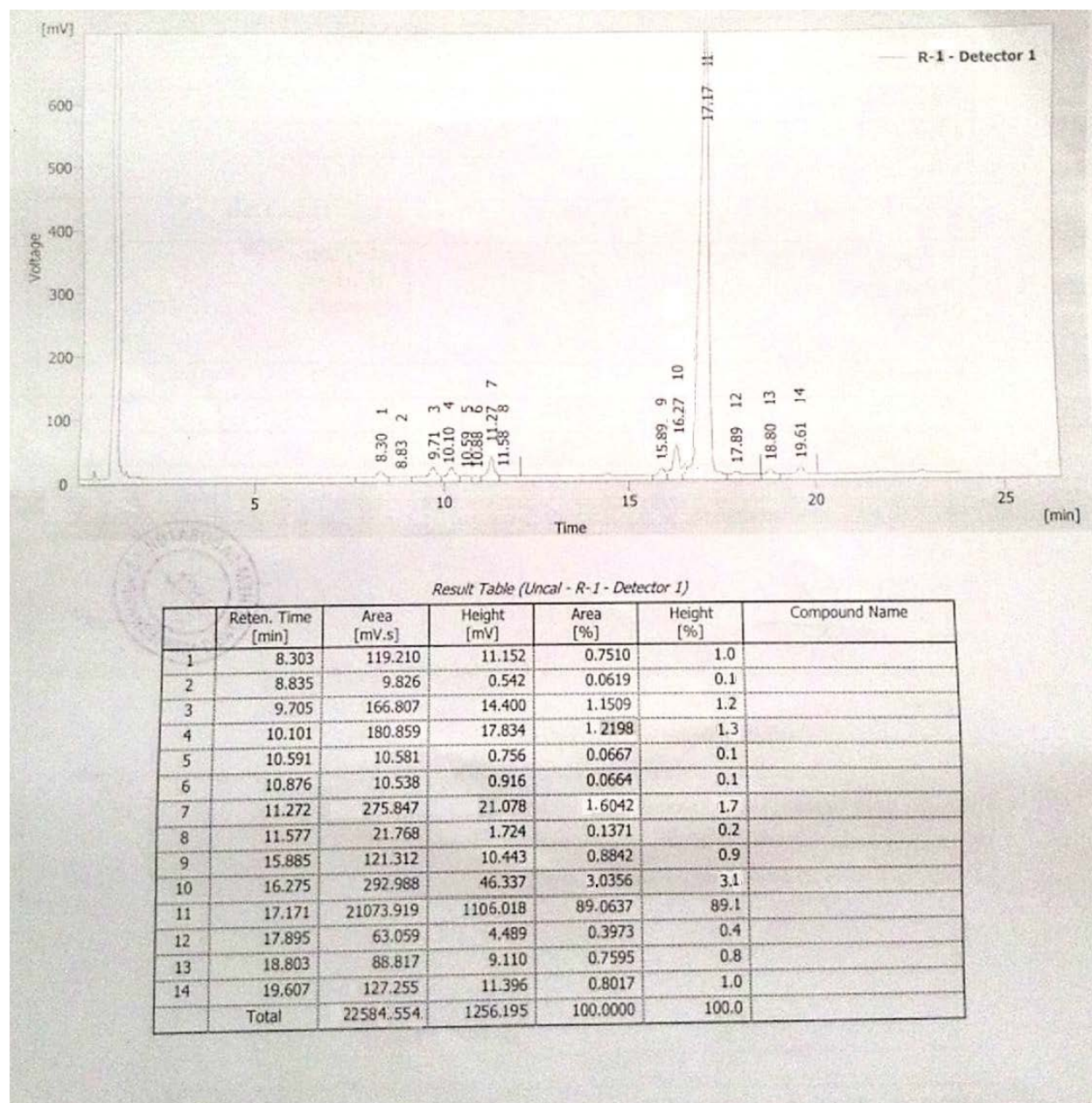


Figure 3: Representative chromatogram from GC analysis of fraction R1 of *M. piperita* essential oil.

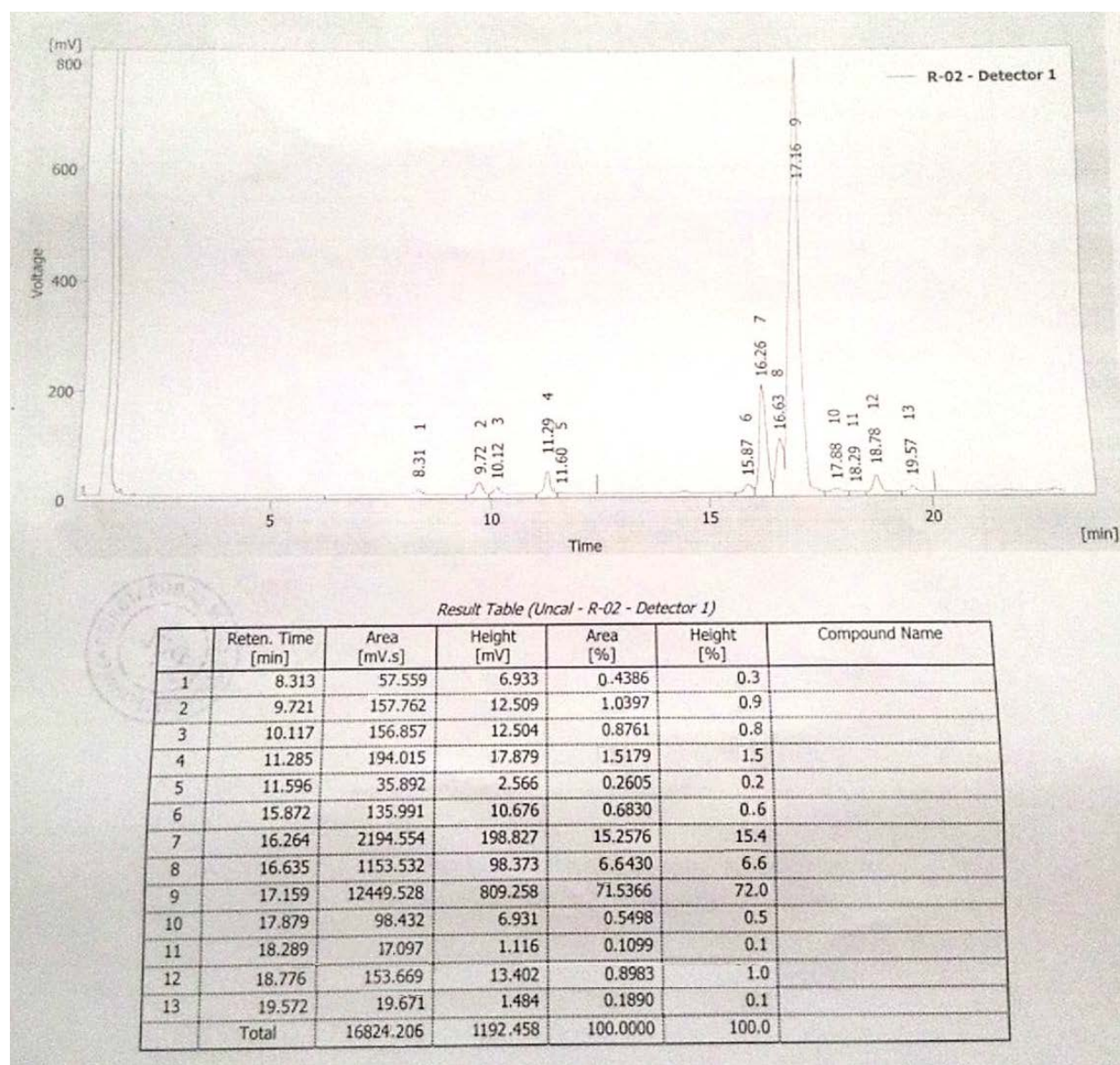


Figure 4: Representative chromatogram from GC analysis of fraction R2 of *M. piperita* essential oil.

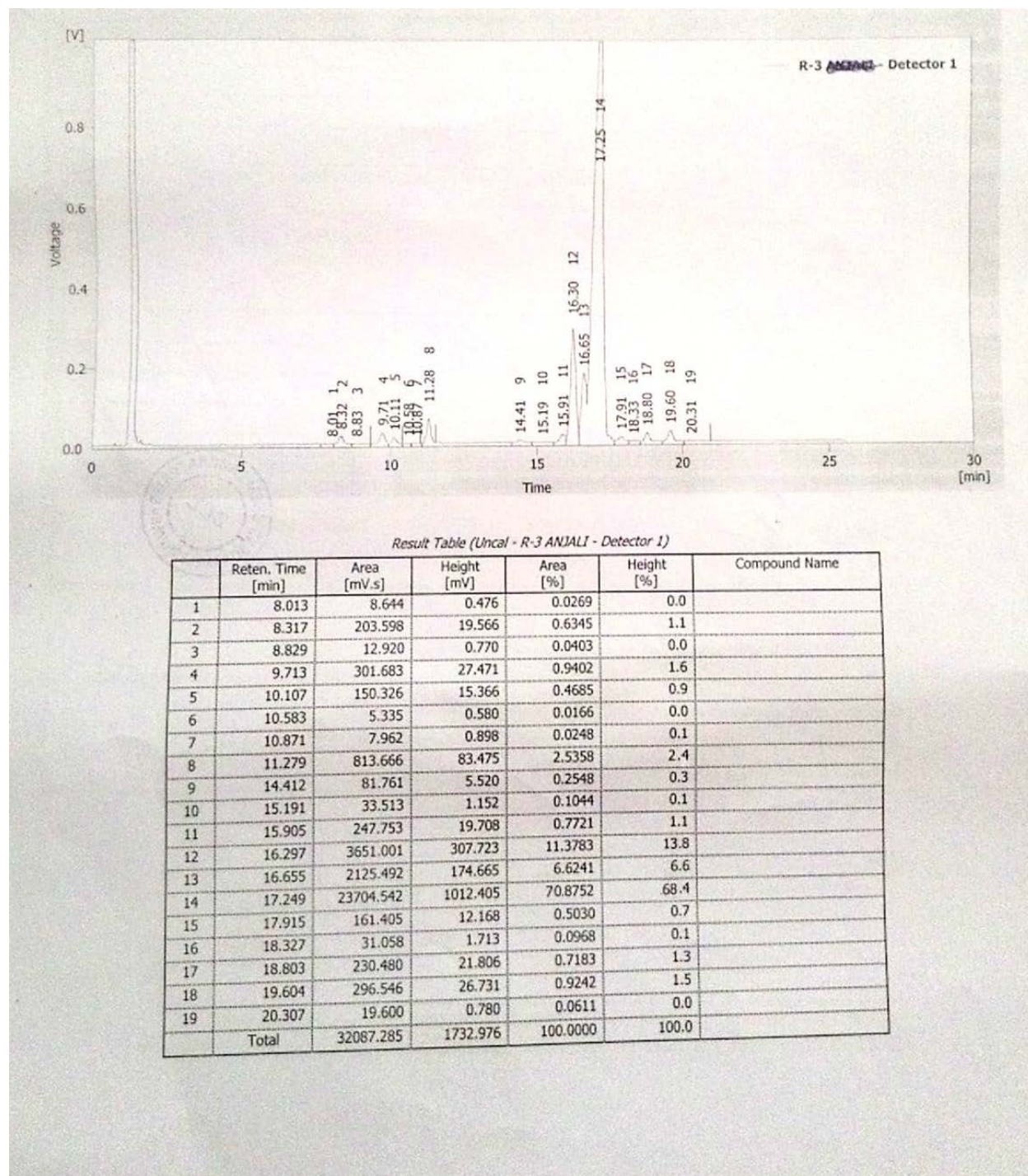


Figure 5: Representative chromatogram from GC analysis of fraction R3 of *M. piperita* essential oil.

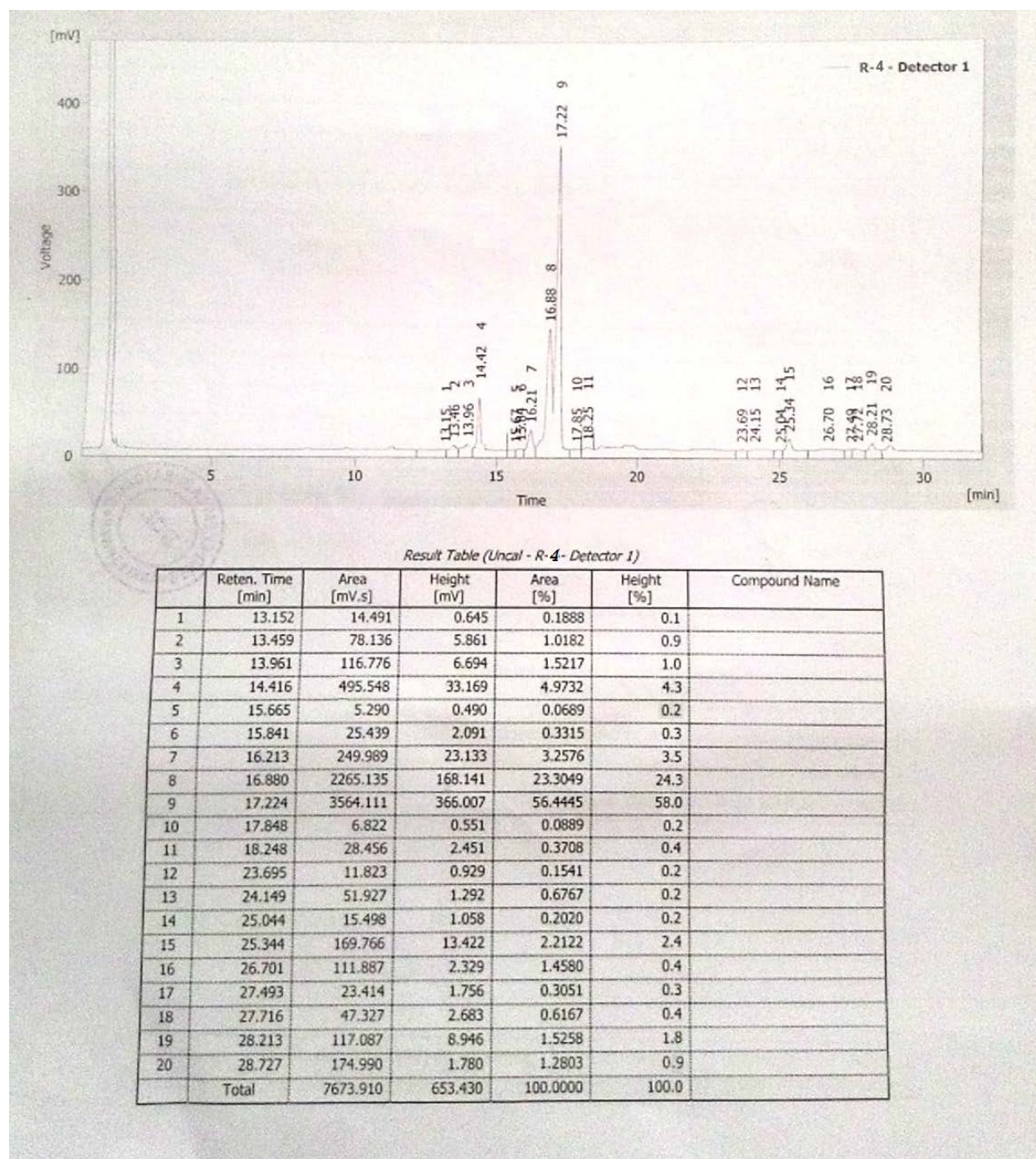


Figure 6: Representative chromatogram from GC analysis of fraction R4 of *M. piperita* essential oil.

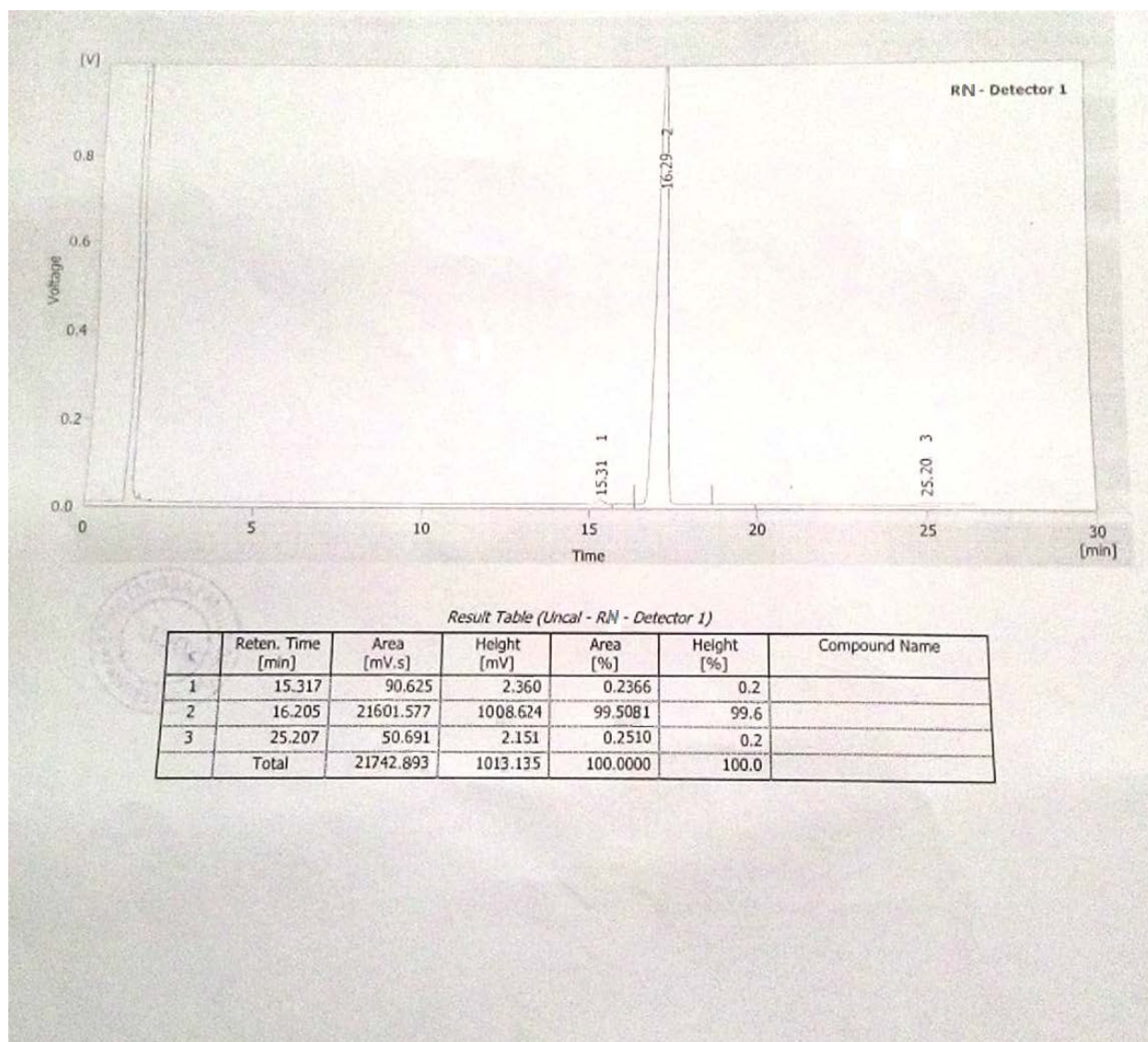


Figure 7: Representative chromatogram from GC analysis of Isomenthone

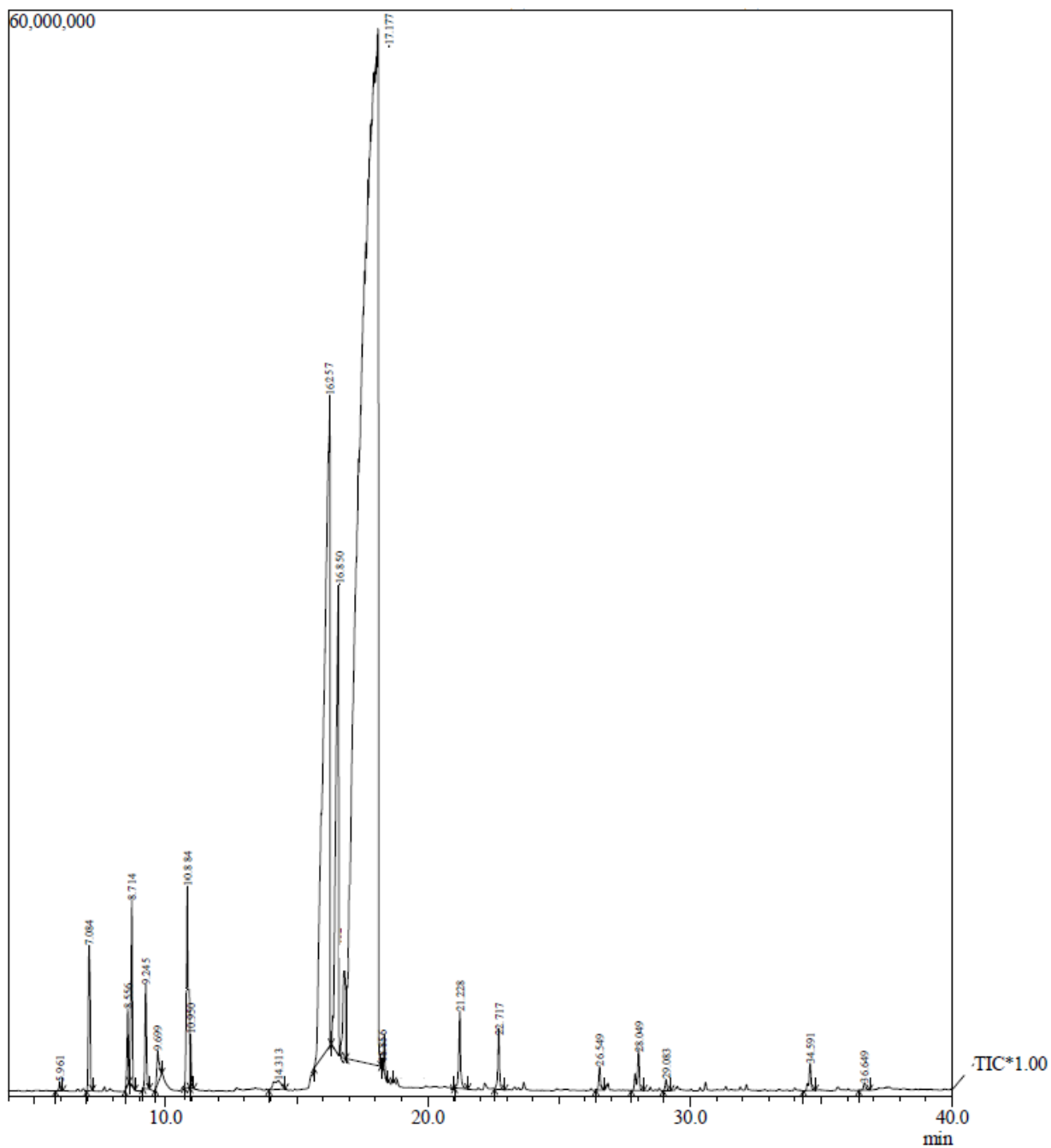


Figure 8: GC-MS chromatogram of most active *M. piperita* essential oil fraction R2

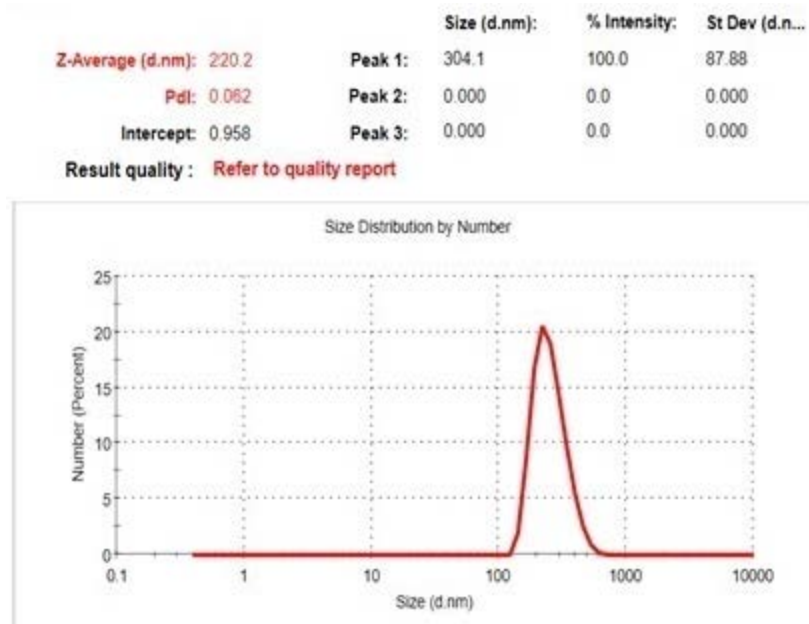


Figure 9: Droplet size distribution of N1 nanoemulsion (O/W, 1:1)

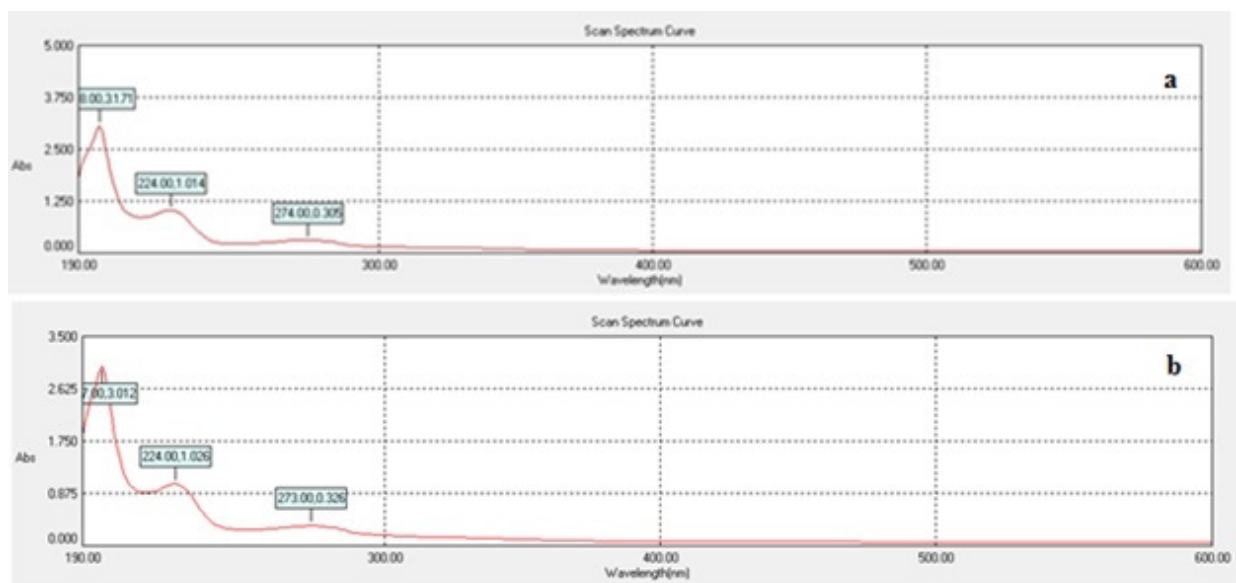


Figure 10: UV-visible spectra of nanoemulsion a) N1 (1:1, O/W); b) N2 (2:3, O/W)